

Southeast Valley

LVNOC #2 - Site Concept Options Update

May 22, 2025

Roller Rink



RIOS



LVNOC #1 Comments

11/19/24

Site Design

- How does the project merge with the existing skate park?
- Additional parking for the Roller Rink Park is preferred
- Remove barriers and create connections between Sheldon Basin public spaces and the Roller Rink Park
- Additional walking trails are not needed
- A BBQ plaza does not need to be considered for the Roller Rink Park, but can be added in the existing Skate Park in the future

LVNOC #1 Comments

11/19/24

Roller Skating Rinks

- Skating rinks as sketched could not properly accomodate an adult roller hockey rink.
- Does the space allow for futsal?
- LVNOC expressed concern over vandalism, graffi, and tree litter on skating surfaces.

New Rec Center

- Locate new Rec Center to be visible from both existing Skate Park and New Roller Rink Park
- The community requests a bigger space to host senior and non-profit organizations activities.

Roller Skate Terrain Typology



Flat Terrain

Flat controlled spaces for: Roller Hockey, Dance, Derby, Rythm/Boogie loop

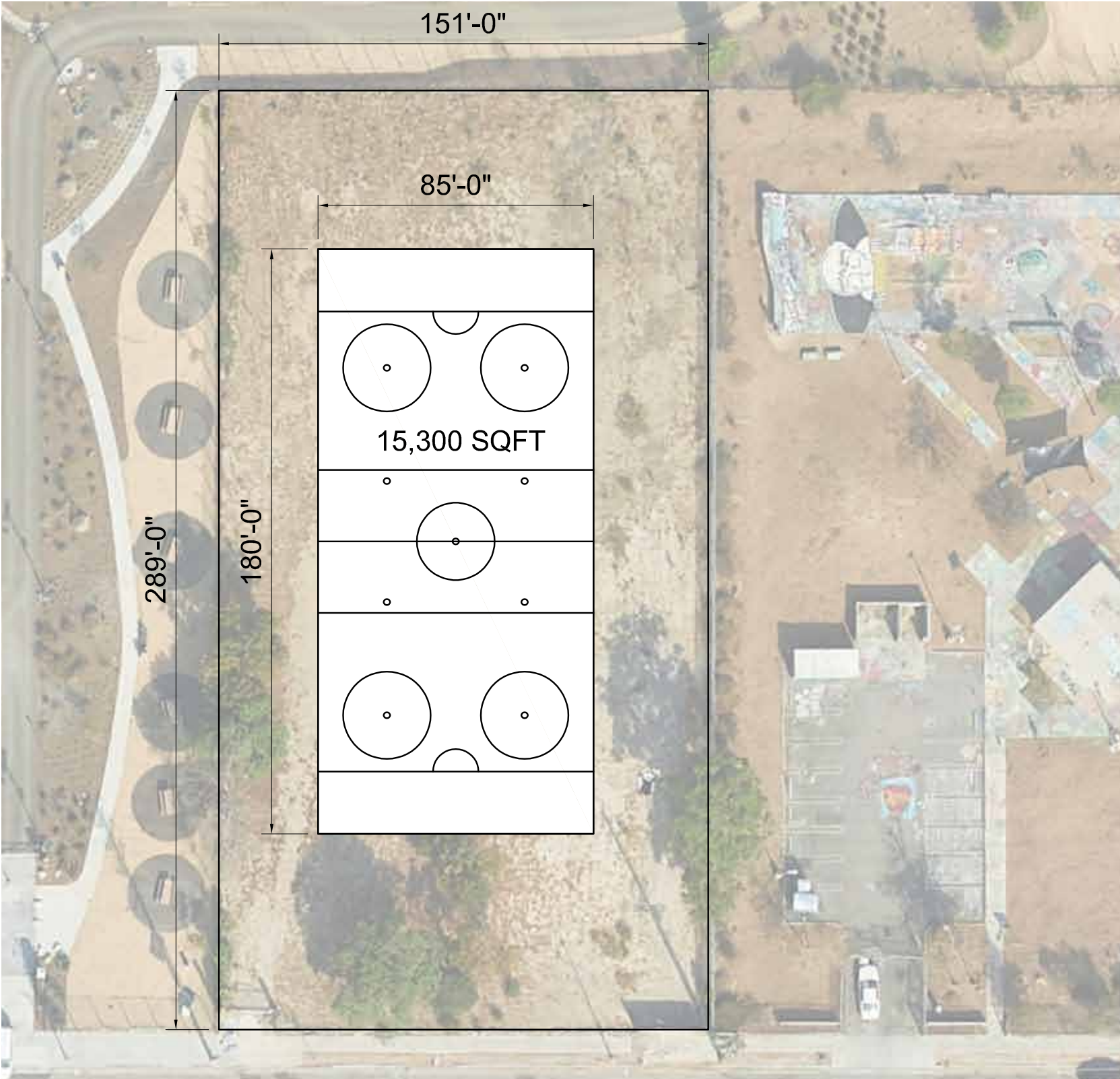
Easy Undulation

Loop track with tight banked corners and gentle undulations

Moderate Challenge

Pump track with steeper banked turns and undulations designed for speed and skill-building

Flat Terrain: Pro Roller Hockey Rink (15,300 SQFT)

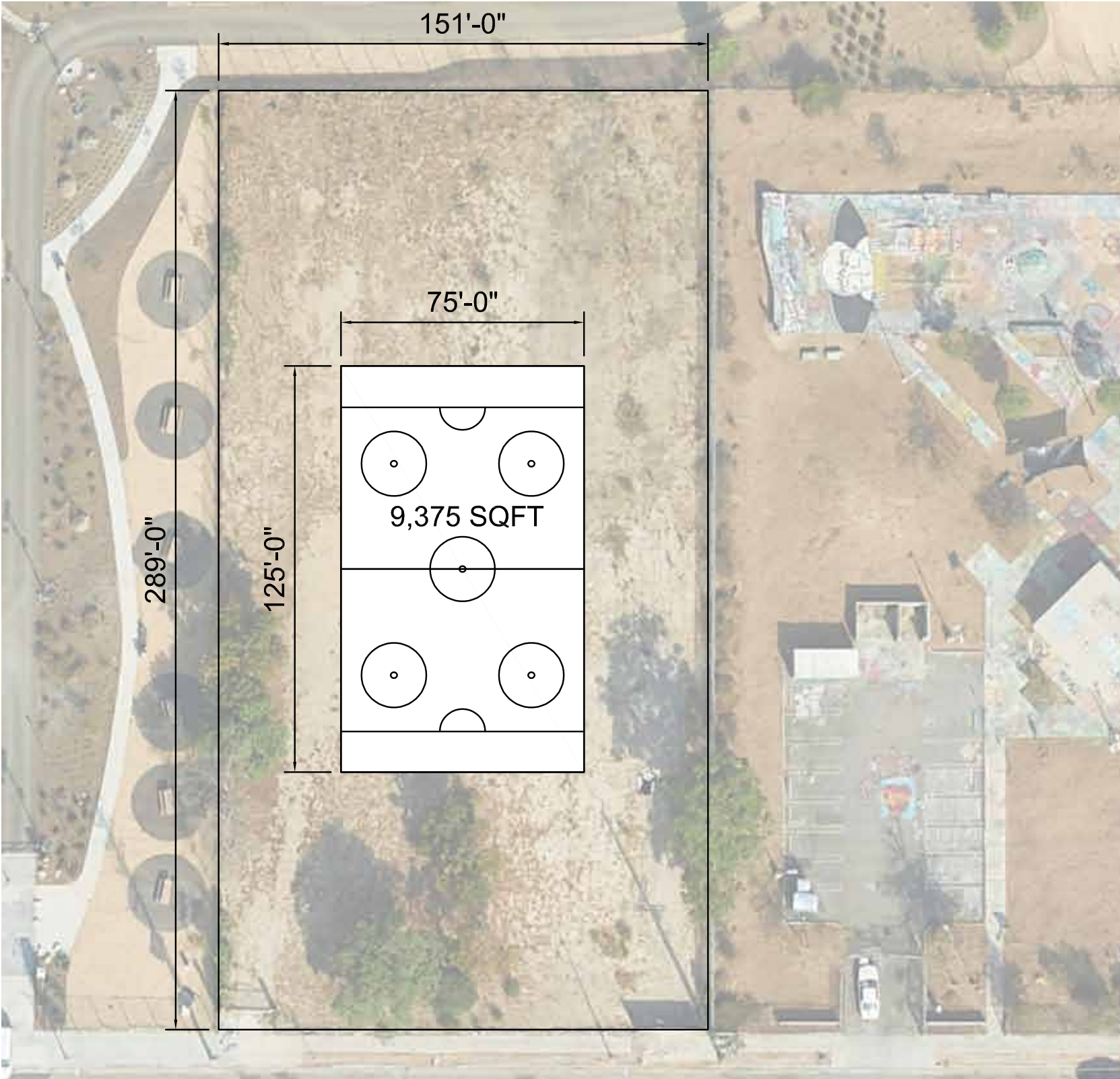


North Hollywood 'The Cage' (6.2mi from site & 14,200 SQFT)



LA Kings Burbank Sports Center (6.3mi from site 14,000 SQFT)

Flat Terrain: Youth Roller Hockey Rink (9,375 SQFT)

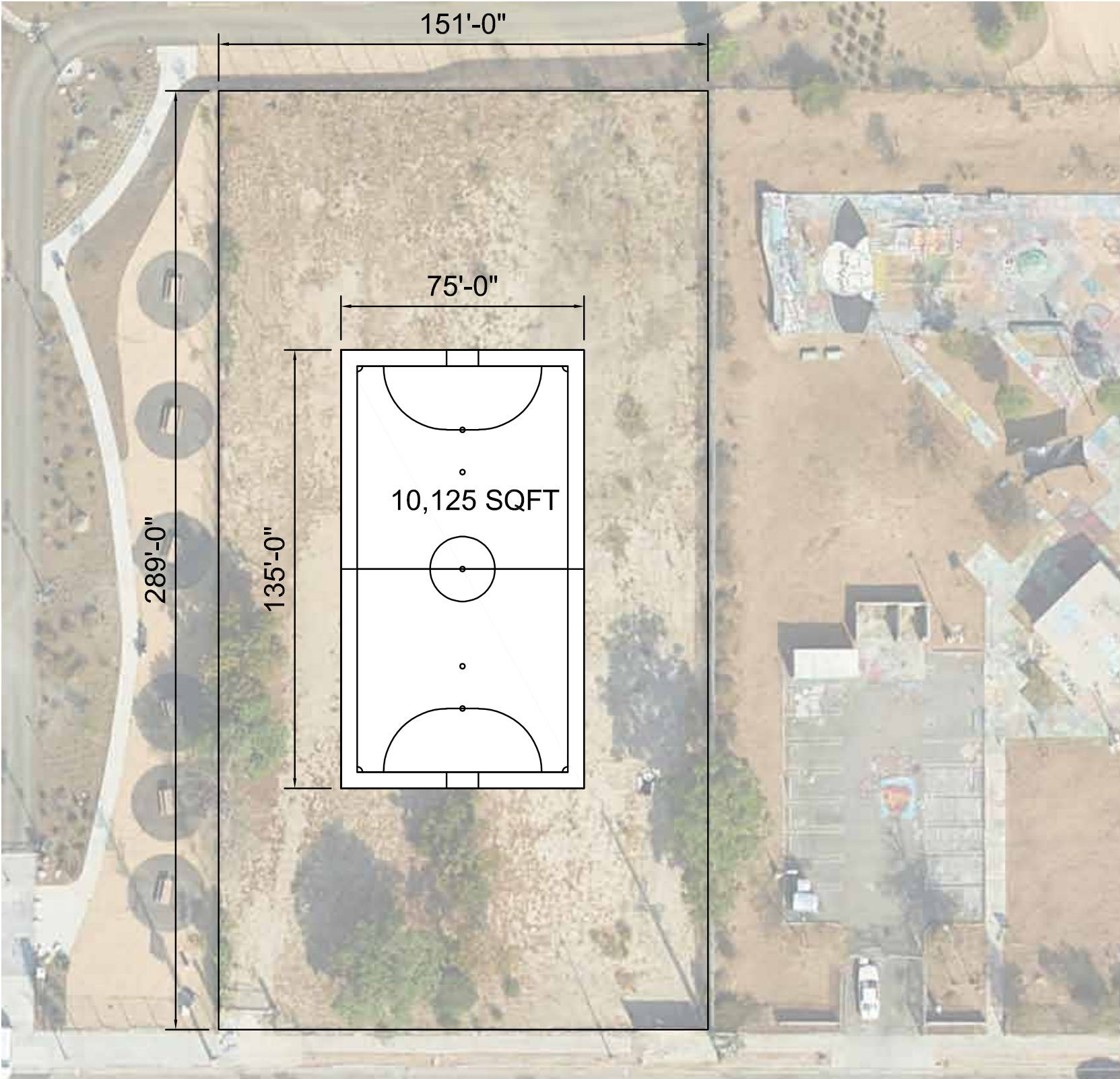


LA Kings Burbank Sports Center Youth Roller Hockey



Arroyo Vista Community Park, Moorpark, CA

Flat Terrain: Futsal Court (10,125 SQFT)



Hawthorne Memorial Park Futsal Court, Hawthorne, CA (7,200 SQFT)

Flat Terrain: Roller Derby Rink (8,100 SQFT rectangular area)



Ringer's Roller Rink, San Diego, CA (6,000 SQFT)



Ringer's Roller Derby Rink, San Diego, CA (4,800 SQFT)

Flat Terrain: Dance Rink (2,827 to 4,027 SQFT)

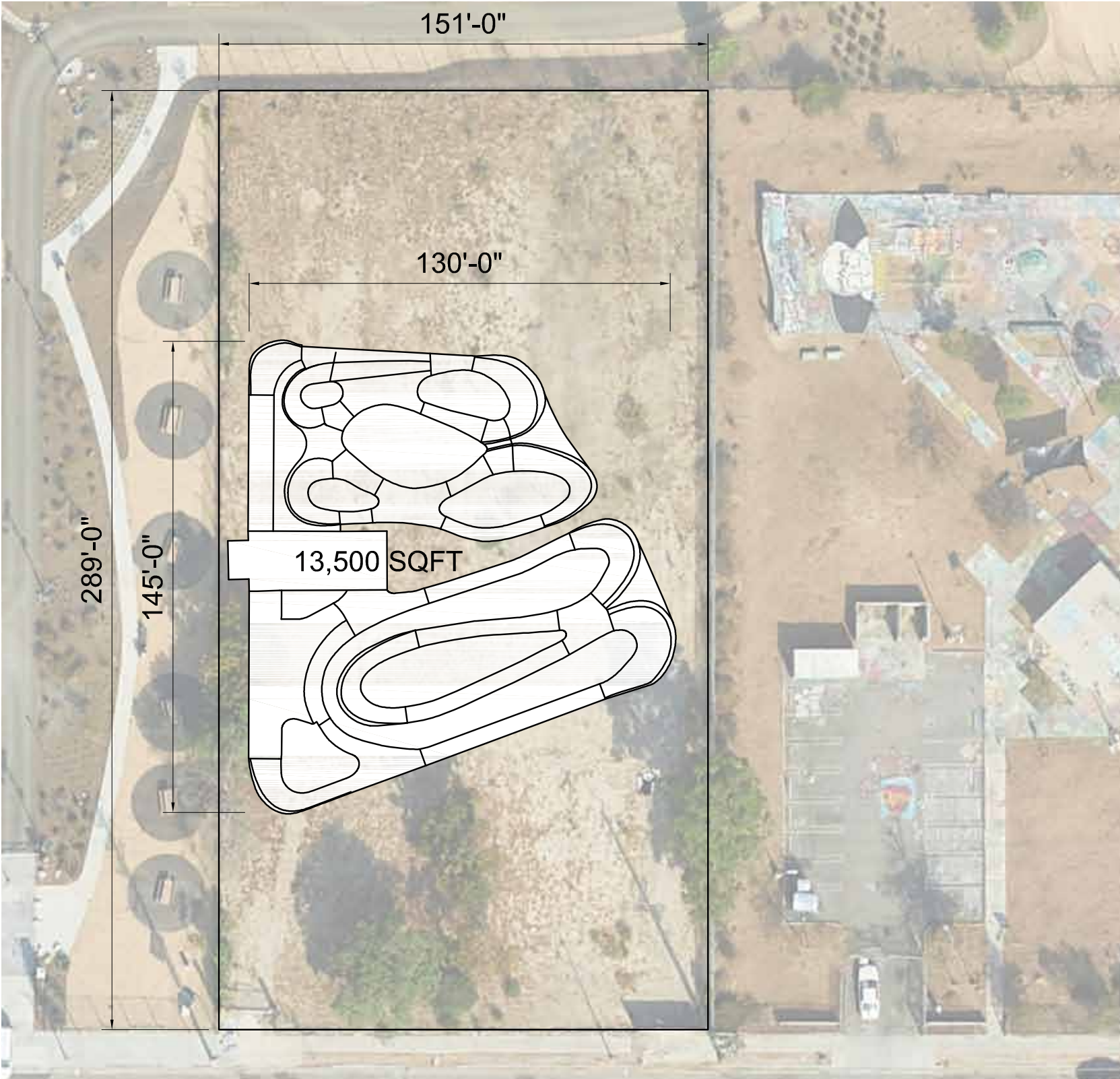


Venice Roller Skate Dance Plaza, Los Angeles, CA (4,800 SQFT)

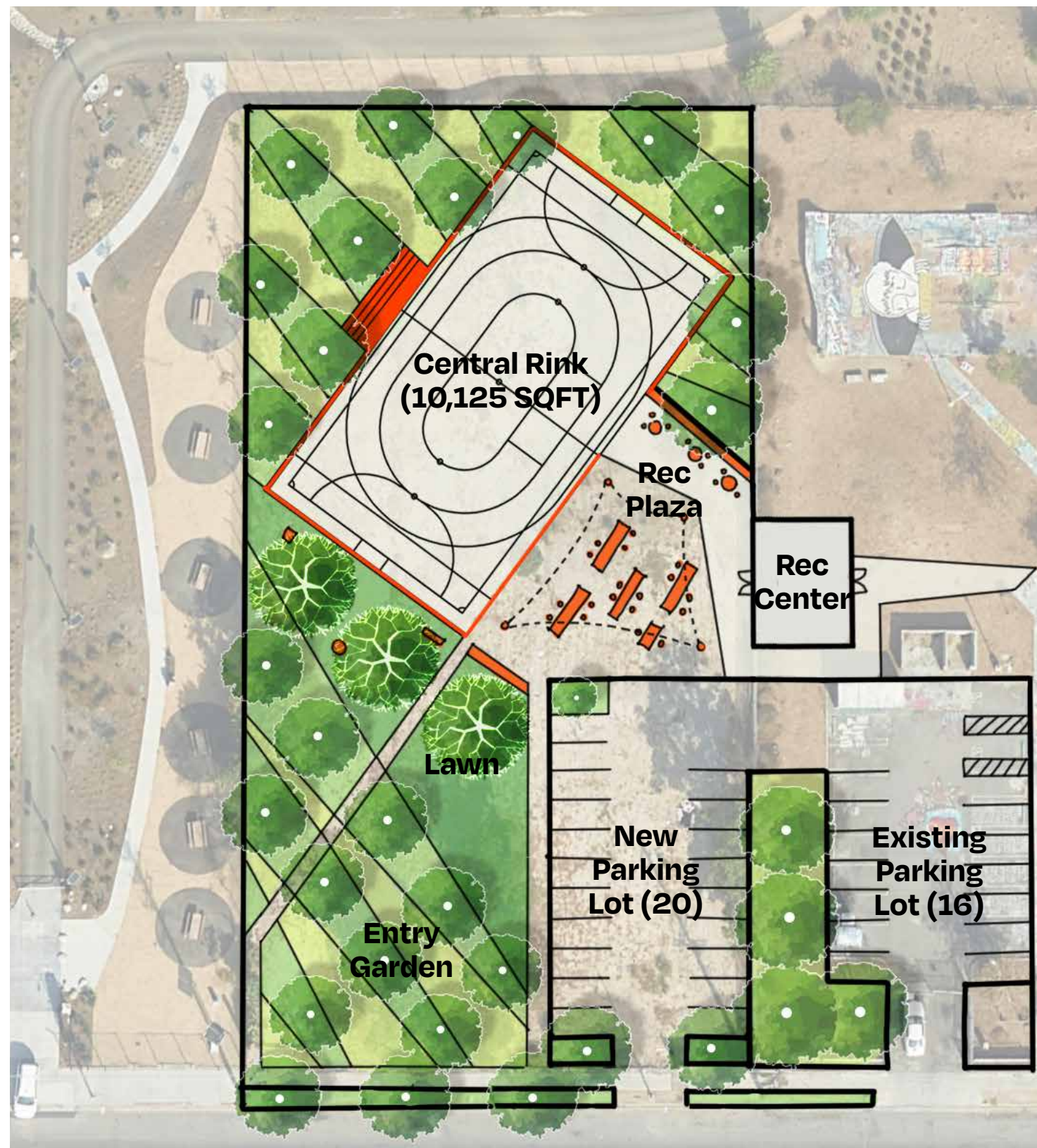


Junipero Beach Sports Courts, Long Beach, CA (opened 09/2024)

Easy Undulation / Moderate Challenge: Pump Track (13,500 SQFT)



Pacific Highland Pump Track, San Diego, CA



Option 1 - Central Rink



Option 2 - Multiple Rinks

Option 1

Opportunities:

1. Consolidate all sports and roller skate program into a single large rink
2. Locate Recreation Center for controlled access to Main Rink, Parking Lot, and Skate Park
3. Can accommodate larger gardens and flexible gathering areas within the property



Option 1 - Central Rink Program Diagram

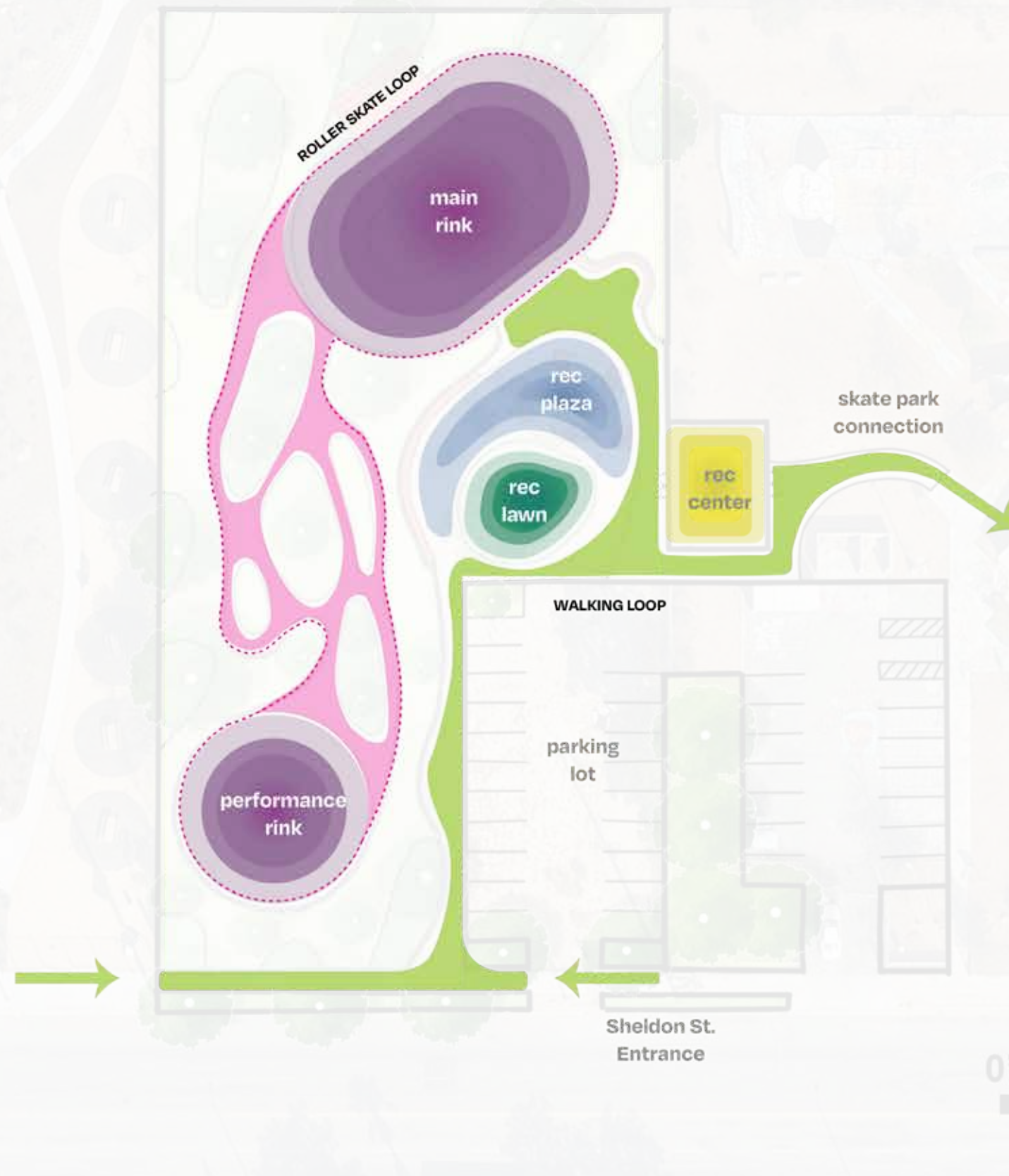


Option 1 - Central Rink

Option 2

Opportunities:

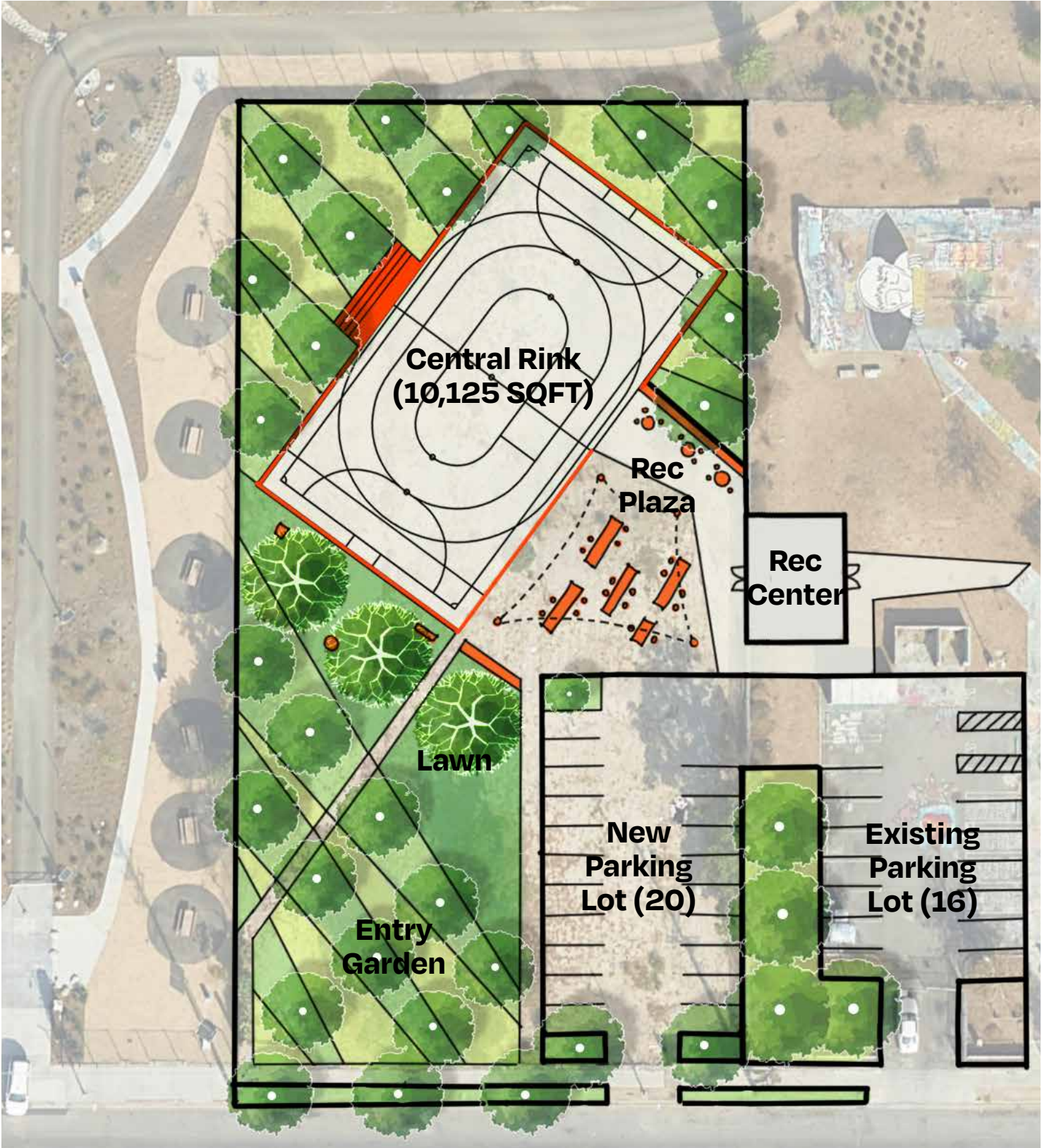
1. Caters to the need for challenge in progression for all ages and wheeled sports using multiple terrain types
2. Locate Recreation Center for controlled access to Main Rink, Parking Lot, and Skate Park
3. Multiple rinks accommodate various skate events and sports to function simultaneously



Option 2 - Multiple Rinks Program Diagram



Option 2 - Multiple Rinks



Option 1 - Central Rink



Option 2 - Multiple Rinks

LVNOC #2 User Survey

5/19/2025

Link:

<https://forms.office.com/r/DYWhBZwzwj>

QR Code:

